



Science Center

Math Department
(4th Floor South)

Evacuation Procedures

Emergency Egress Stair
Stair 4

Emergency Egress Stair
Stair 6

Designated Meeting Area

Plaza between
Science Area and
Harvard Yard

Secondary Indoor Meeting Site

Northwest
Building- B1
Lobby Area

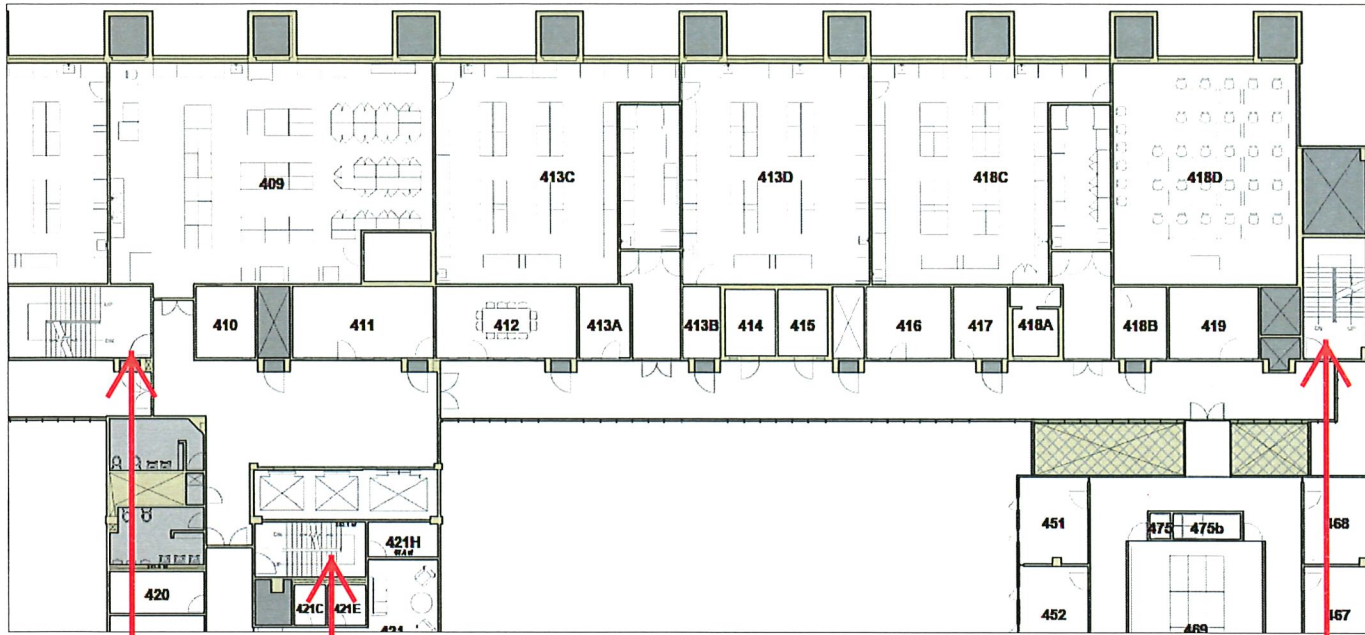
Developed by Science Center
Building Operations

For more information contact:

Mark Pimentel
Building Manager
1 Oxford Street

495-2653

August 29, 2019



Science Center

Biology Department
(4th Floor East)

Evacuation Procedures

Emergency
Egress Stair
Stair 1

Emergency
Egress Stair
Stair 4

Emergency
Egress Stair
Stair 3

**Designated
Meeting Area**

Mallinckrodt
Lawn

**Secondary Indoor
Meeting Site**

Northwest
Building- B1
Lobby Area

Developed by Science Center
Building Operations

For more information contact:

Mark Pimentel
Building Manager
1 Oxford Street

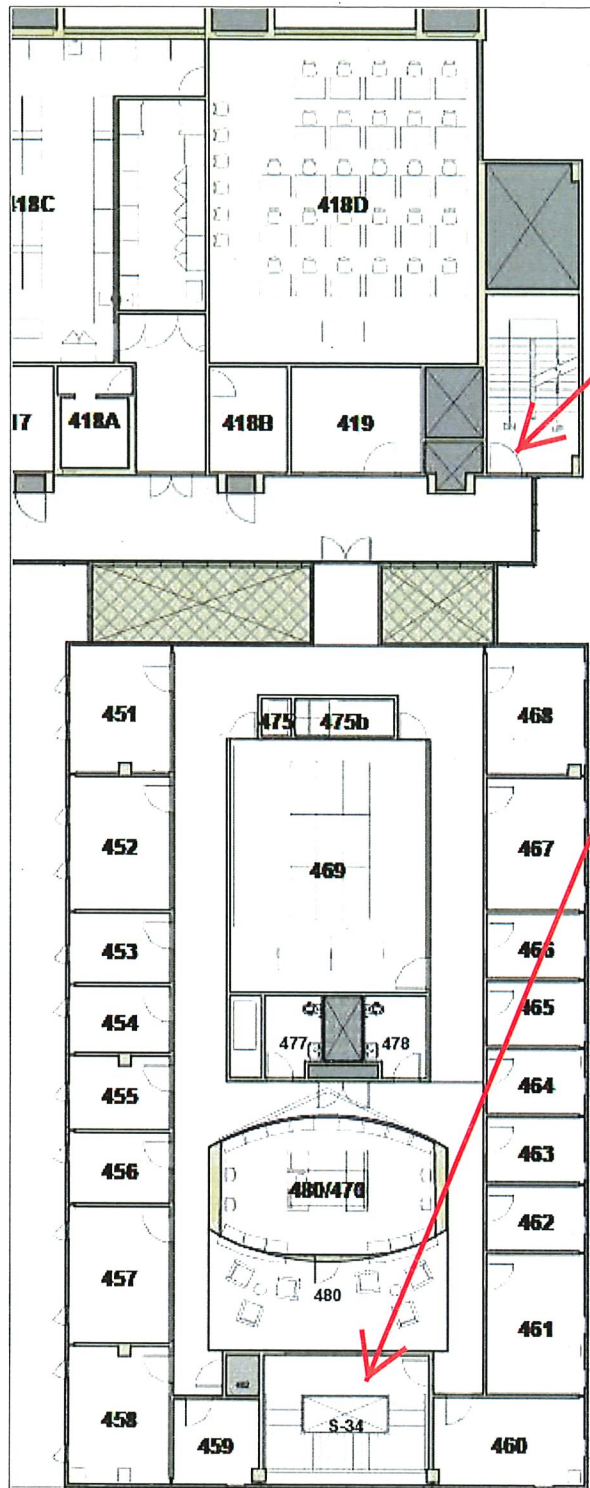
495-2653

August 29, 2019

Science Center

History of Science
Department
(4th Floor East)

Evacuation Procedures



Emergency
Egress Stair
Stair 3

Emergency
Egress Stair
Stair 34

Designated
Meeting Area

Mallinckrodt
Lawn

Secondary Inside
Meeting Site

Northwest
Building- B1
Lobby Area

Developed by Science Center
Building Operations

For more information contact:

Mark Pimentel
Building Manager
1 Oxford Street

495-2653

August 29, 2019



**Emergency
Egress Stair
Stair 2**

**Emergency
Egress Stair
Stair 1**

Science Center

**Biology Department
(4th Floor West)**

Evacuation Procedures

**Designated
Meeting Area**

Littaire
Lawn

**Secondary Indoor
Meeting Site**

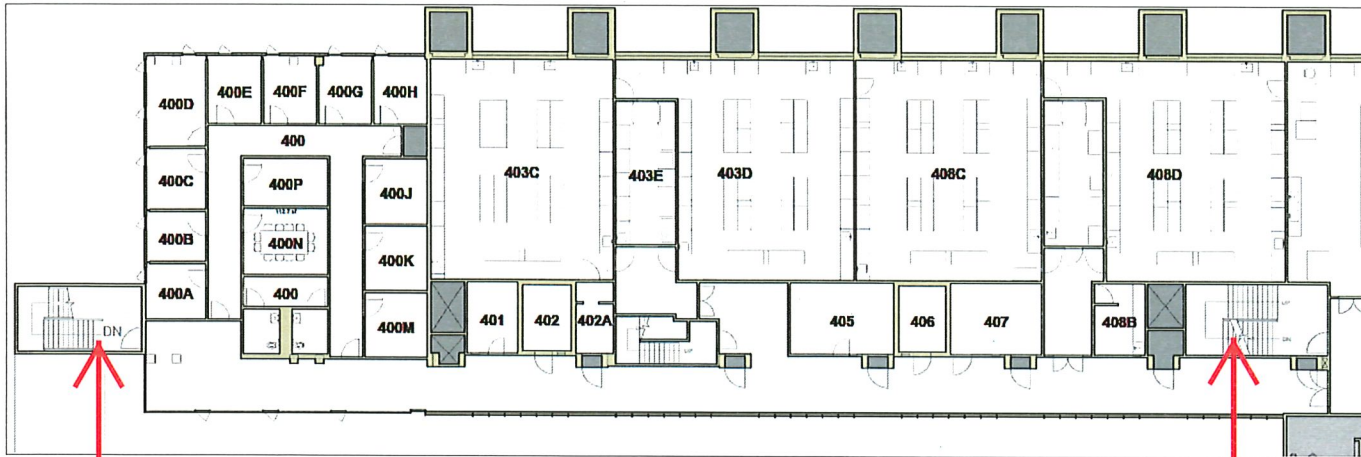
Northwest
Building- B1
Lobby Area

**Developed by Science Center
Building Operations**

For more information contact:

Mark Pimentel
Building Manager
1 Oxford Street

495-2653



**Emergency
Egress Stair
Stair 2**

**Emergency
Egress Stair
Stair 1**

Science Center

**Statistics Department
(4th Floor West)**

Evacuation Procedures

**Designated
Meeting Area**

Littaire
Lawn

**Secondary Indoor
Meeting Site**

Northwest
Building- B1
Lobby Area

**Developed by Science Center
Building Operations**

For more information contact:

Mark Pimentel
Building Manager
1 Oxford Street

495-2653